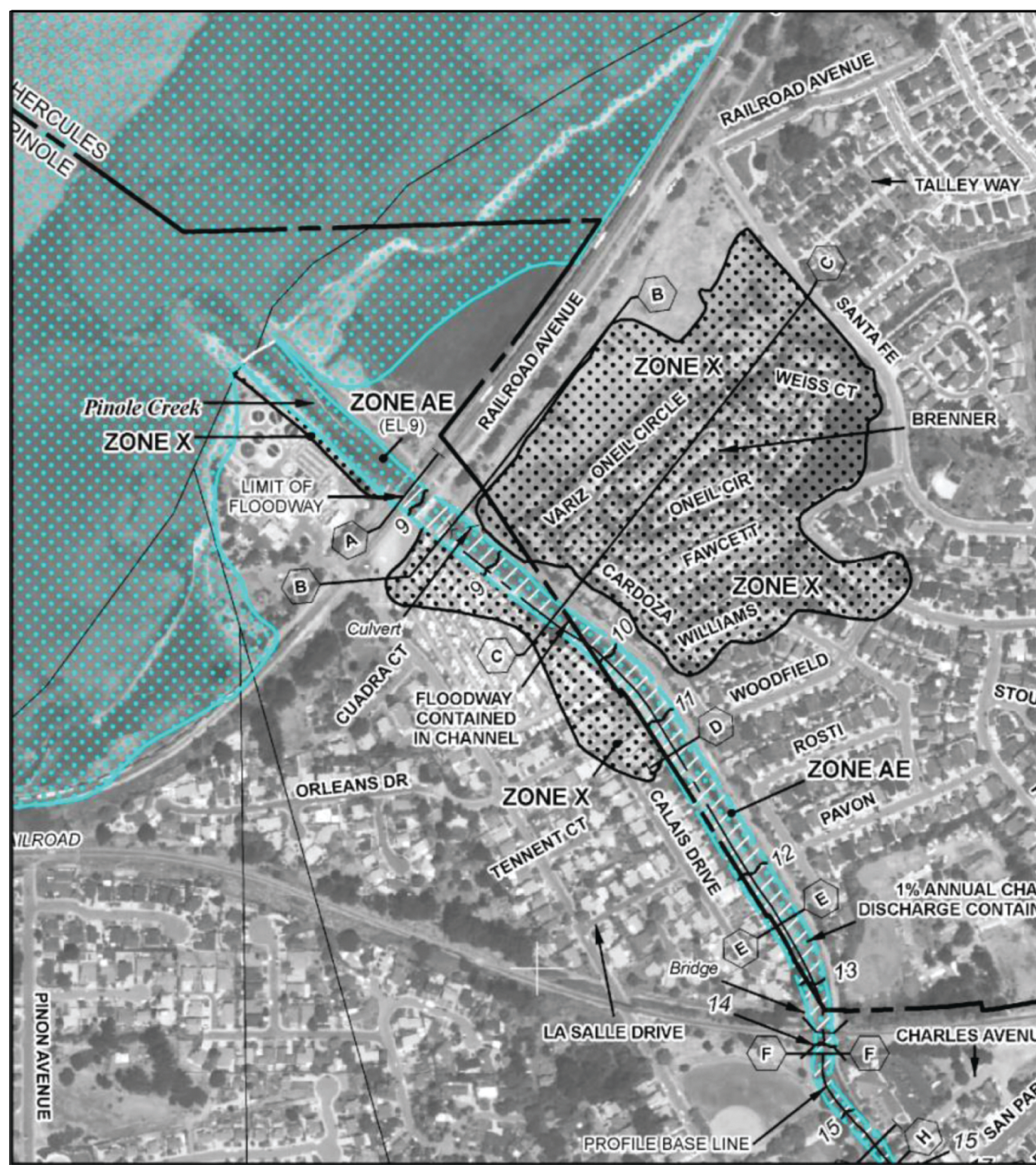


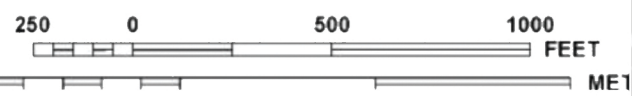
APPENDIX F-3

FLOOD INSURANCE RATE MAP (FIRM)

Figure X-XX. Flood Insurance Rate Map (FIRM) for Project Area



MAP SCALE 1" = 500'



PANEL 0043F

FIRM
FLOOD INSURANCE RATE MAP

CONTRA COSTA COUNTY,
CALIFORNIA
AND INCORPORATED AREAS

PANEL 43 OF 602
(SEE MAP INDEX FOR FIRM PANEL LAYOUT)

CONTAINS

COMMUNITY	NUMBER	PANEL	SUFFIX
HERCULES, CITY OF	06034	0043	F
PINOLE, CITY OF	06032	0043	F

Notice to User: The Map Number shown below should be used when placing map orders; the Community Number shown above should be used on insurance applications for the subject community.

MAP NUMBER
06013C0043F

EFFECTIVE DATE
JUNE 16, 2009

Federal Emergency Management Agency

This is an official copy of a portion of the above referenced flood map. It was extracted using F-MIT On-Line. This map does not reflect changes or amendments which may have been made subsequent to the date on the title block. For the latest product information about National Flood Insurance Program flood maps check the FEMA Flood Map Store at www.fws.fema.gov



Date: December 2013
Source: Questa Engineering Corp.